



MEDISLIPPER 1000

NEW 2016 MODEL - THE CONTINUOUS INNOVATION



FOR A FAST AND
EFFECTIVE RECOVERY
OF ANKLE SPRAINS

- TIBIO-TARSAL CIRCUMDUCTION
- **NEW:** ANGULAR VELOCITY
- **NEW:** FORCE SENSORS



MAXIMUM FLEXIBILITY FOR CUSTOMIZED HIGH THERAPEUTIC PERFORMANCES

ANKLE LESIONS ARE VERY COMMON TRAUMAS AND HAVE A PARTICULARLY HIGHER INCIDENCE AMONG SPORTS PRACTITIONERS.

MAKE THE DIFFERENCE BY ENTERING MEDISLIPPER 1000 IN YOUR FUNCTIONAL REHABILITATION CIRCUIT FOR ANKLE INJURIES, AS AN INNOVATIVE DEVICE FOR THE MULTIFUNCTIONAL RECOVERY OF TIBIO-TARSAL ARTICULATION.



**MEDISLIPPER 1000 CAN BE EXPLOITED IN MEDICAL, TRAUMATOLOGY,
SPORTS AND NEUROLOGICAL FIELD.**

MEDSLIPPER 1000

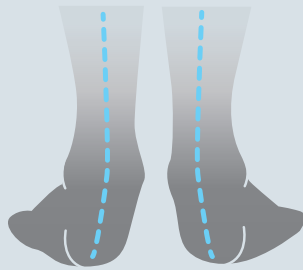
TECHNOLOGICALLY INNOVATIVE

MEDSLIPPER 1000 is a technologically innovative apparatus, unique and specific for the muscle training and the ankle rehabilitation in **traumatology, sports medical and neurological fields**. Allows an effective recovery of **proprioception** and tibio-tarsal articulation range of motion in all hypo-mobility conditions.

DEPENDING ON THE NEEDS MEDSLIPPER 1000 CAN BE USED IN ACTIVE OR PASSIVE MODE WITH ADJUSTABLE RESISTANCE AND SPEED, SO THAT TREATMENT CAN BE CUSTOMIZED ACCORDING TO SINGLE PATIENT SITUATION SO TO OPTIMIZE FUNCTIONAL RECOVERY OF ANKLE AND LOWER LIMB.

MEDSLIPPER 1000

ALLOWS THE FUNCTIONAL RECOVERY OF THE FOLLOWING MOVEMENTS:



valgization



Dorsal flexion



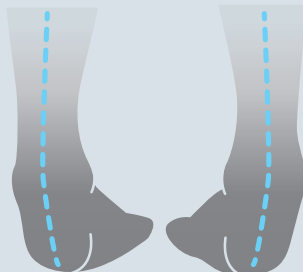
plantar flexion



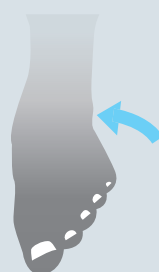
Supination



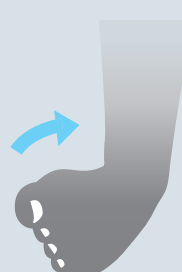
pronation



Varization



Eversion



inversion



adduction



Abduction

NEW MEDISLIPPER 1000



NEW TECHNOLOGY
FOR AN OPTIMAL AND
QUICK RECOVERY



HOW DOES MEDISLIPPER 1000 WORK?

MEDISLIPPER 1000 introduces the possibility to stimulate the mechanoreceptors and proprioceptors determining a rapid muscle activation in all circumstances. Acting on the articular excursion and speed of movement it is possible to act on the complex movements of the ankle allowing you to achieve outstanding results.

MEDISLIPPER 1000 allows an **optimal recovery thanks to the execution mode PASSIVE and ACTIVE** and to the possibility of acting on various parameters such as the speed of movement, the articular excursion and the resistance.



DISCOVER THE INNOVATION MEDISLIPPER 1000

Medislipper 1000 is the new technology applied to the apparatus which allows recovery especially after:

**DISTORSION
TRAUMAS**
with capsular
ligament affection

**ARTICULAR
CONTUSIONS**

FRACTURES

**MUSCLE
SPRAINS**

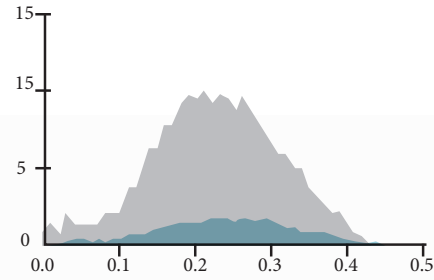
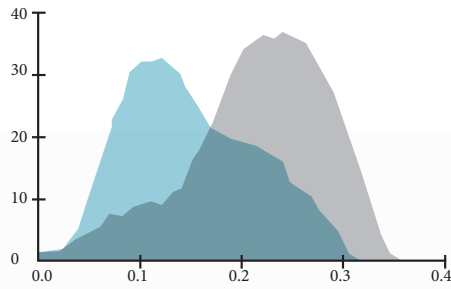
**PROPRIOCEPTIVE
AND NEUROMOTOR
REEDUCATION**

THE EVOLUTION OF MEDISLIPPER 1000

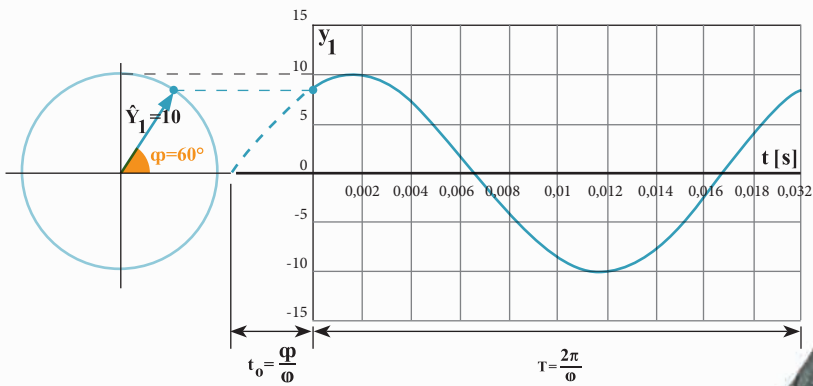
NEW 2016 MODEL EQUIPPED WITH INNOVATIVE FEATURES:



● FORCE IN TIME



● ANGULAR VELOCITY

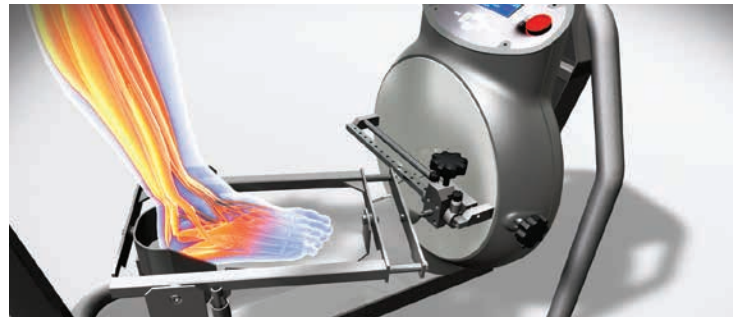


WORKING PHASES

MEDISLIPPER 1000

ACTIVE PHASE: DYNAMIC STABILIZATION

In **ACTIVE** mode is the patient that activates the circling movement previously set by the therapist. With this working mode there is a **DYNAMIC STABILIZATION** on muscular component (coordinated action) and an effective proprioceptive stimulation.



PASSIVE PHASE: STATIC STABILIZATION

In **PASSIVE** mode the movement is activated by a specific electronic function, with this working mode there is a **STATIC STABILIZATION** of bones and ligaments as well as a **PASSIVE MOBILIZATION** and **PROPRIOCEPTIVE STIMULATION**.



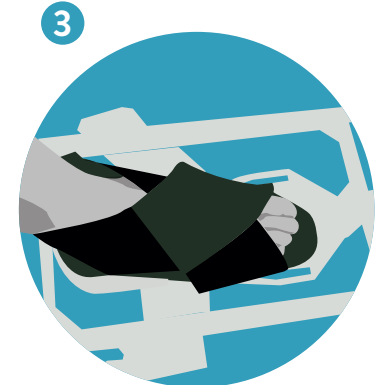
EVALUATION OF TREATMENT

Thanks to the specific **FORCE SENSORS** you can monitor the angular velocity of the active exercise (revolutions per second) and the imprinted force (Newton). This feature therefore allows the therapist to check the actual improvement of the patient as a result of rehabilitation or training carried out.

HOW TO USE MEDISLIPPER 1000 ?

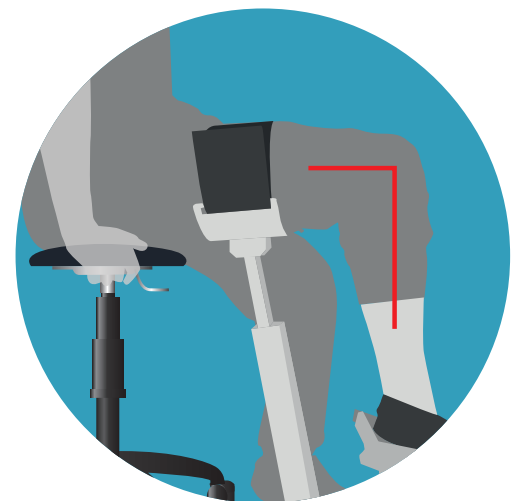
FOOT POSITION

position the patient's foot in the dedicated housing and block it with the stripes included. Cross the stripes around the foot to position it properly, as showed in picture (1, 2 and 3).



STOOL

use for the exercise a stool with height regulator modified in order to find the right position for each single patient (57/70 cm).



EXERCISE POSITION

In order to perform the exercise correctly, the patient's leg must be positioned as showed in the picture.

TECHNICAL SPECIFICATIONS

MEDISLIPPER 1000

Power supply:	220/230 V \approx 50/60 Hz
Max absorption:	150 Watt
EMI directive:	EN 60601-1-2
Max patient weight allowed:	110 kg



THANKS TO
MEDISLIPPER 1000
IT IS POSSIBLE TO OBTAIN
OUTSADING RESULTS IN
MEDICAL, SPORTS AND
TRAUMATOLOGY FIELDS.



CHARACTERISTICS

MEDISLIPPER 1000





Want to learn more about Medislipper 1000?

CONTACT our sales office
our operator will respond your issues.

REQUEST free no obligation quote

Writing an e-mail to:

info@medisport.it

REQUEST from abroad

Write an e-mail to:

export@medisport.it

THE EXPERT will reply to queries

Write at:

expert@medisport.it

READ our scientific references on our website

www.medisport.it

Medisport S.r.l.

via Acque Alte 23

04010 Borgo Podgora (Latina) - Italy

Tel: +39 0773 636100

Fax: +39 0773 636002

www.medisport.it

info@medisport.it

<http://www.medislipper-medisport.com>

<http://store.medisport.it>